

The Can Can Part 2

Teacher Resources

Activities in this pack:



Activity 6 Listen



Activity 7 Create



Activity 8 Perform

TSO.COM.AU

TSO
Feel more



Identify the Music Structure

Below are all the sections of the music. In this task you need to list them in the order that they are heard to create a plan, or structure, of the music.

Introduction

Ending

Theme A

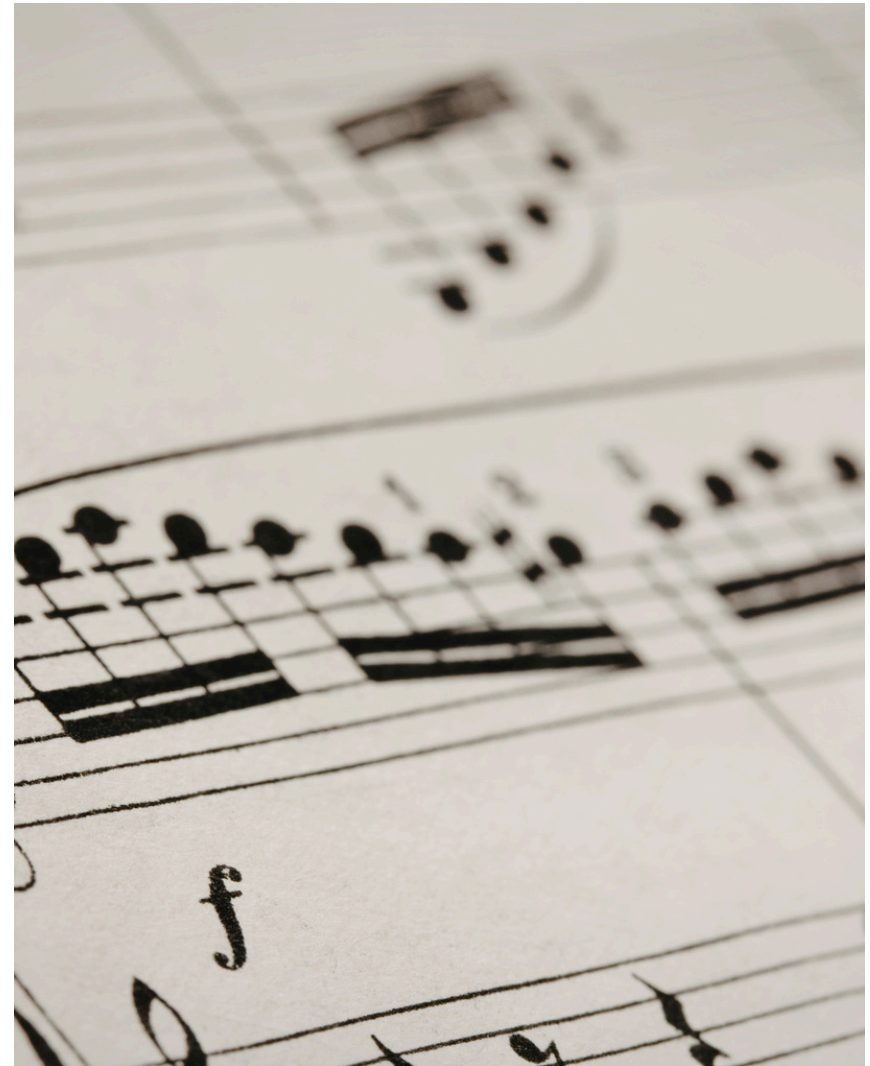
Theme A

Can Can Theme

Can Can Theme

Bridge

Listen to the full performance and put the sections in order to show the full structure of the music.



Answer: Introduction, Theme A, Bridge, Can Can Theme, Theme A, Can Can Theme, Ending



The power of words over music

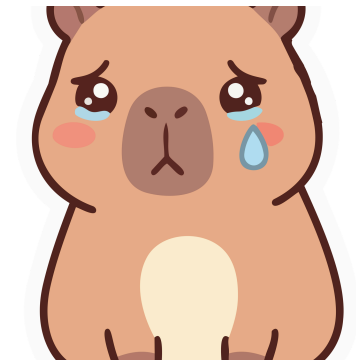
The original title of this piece is Infernal Galop – meaning to dance wildly or to dance with primitive energy, animal-like abandon. Definitely not dancing in a polite and refined manner. The music is marked “very fast” by the composer.

When a composer writes performance directions on the page it tells the musicians important information about how they interpret the music, which impacts the type of sound they make, the volume, the speed, the way they shape the tune and the general energy – every aspect of the performance.

Consider how this piece would sound if it was marked with the following, and what the musicians might do.

- Gently, like a lullaby
- Sadly, like a funeral march
- Timidly, like a whisper

Perform the tune from activity 1 using instruments or your voices in your own interpretation of one of the above styles.





The Can Can Percussion Score

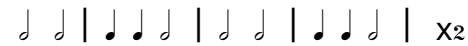
Use this percussion score for your students to read and play along with the recording using untuned percussion instruments.



Intro



Tune A



Bridge



Rest count 7 bars

Tune B: Can Can



Repeat all tune B

Tune A



Tune B



Ending

