

UKE BOX

Have You Ever Tried To Draw A Tuba?

Activities in this pack:



Information



Activity 1 **Perform**

UKE BOX - Have You Ever Tried To Draw A Tuba?

UKE BOX features video performances of original songs, written and arranged by Tasmanian songwriter Eleanor Tucker. Each arrangement showcases orchestral instruments as well as encouraging ukulele players of all levels to have a go and play-along.

Chord and tab charts are displayed on screen, and each song is followed by an up-close demonstration of ukulele technique. Duplicate videos displaying song lyrics are available as well as support materials for free download, including lead sheets and notes for teachers.

“Each song has been written with the ukulele in mind. I have tried to keep these parts as simple and accessible as possible (mainly 1 & 2 finger chords/ some pentatonic melodies) while simultaneously providing enough variety to retain interest, and extend playing technique.”

Eleanor Tucker 2021



Learning Have You Ever Tried To Draw A Tuba?

“Draw the instruments of the orchestra while listening to each instrument being individually played”, said the lesson plan. I thought I would give it a try with my Prep-2 class. We discovered that drawing a tuba is much harder than drawing a dog.

The tune is based on a mambo feel, with the clavé and the bongos implying a traditional Cuban rhythm section. However, this song is delivered at a much slower tempo than how mambos are usually played. I hope that it will inspire listeners to explore the richness of Cuban music which has been hugely influential on my own music.”

Eleanor Tucker 2021

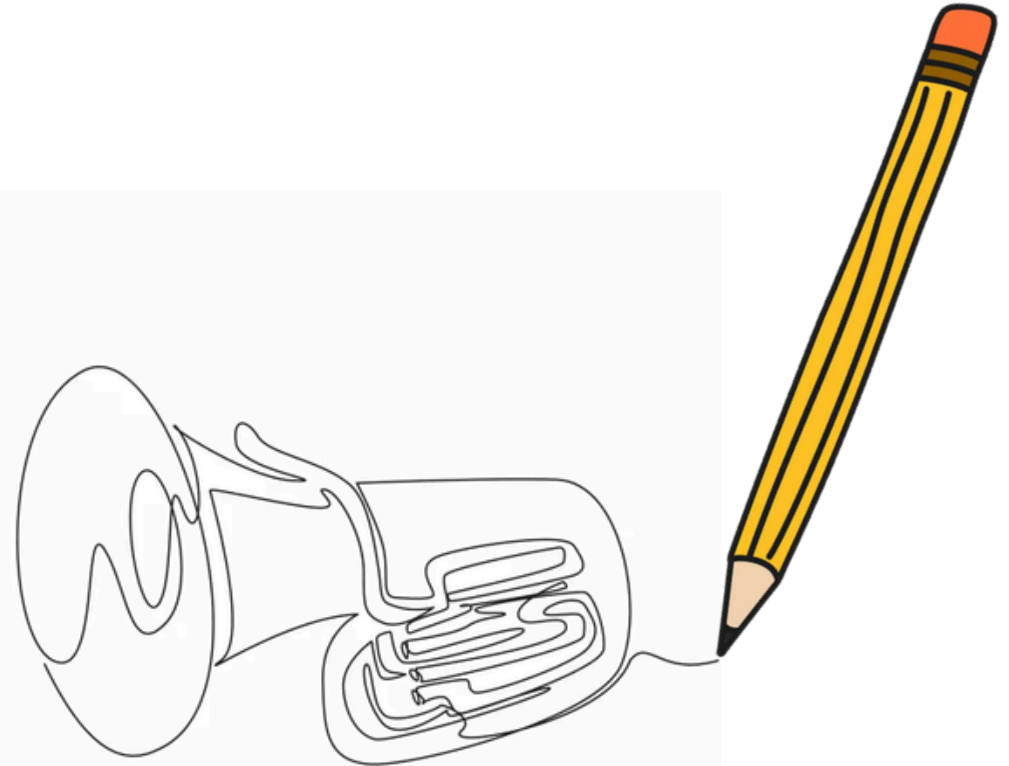
Watch [“Have You Ever Tried to Draw a Tuba?”](#) with ukulele chords and demonstration

Watch [“Have You Ever Tried to Draw a Tuba?”](#) with lyrics

[“Have You Ever Tried to Draw a Tuba?”](#) Lead Sheet

[“Have You Ever Tried to Draw a Tuba?”](#) Lyric Sheet

[“Have You Ever Tried to Draw a Tuba?”](#) Notes for Teachers





"Have You Ever Tried to Draw a Tuba?"

E. Tucker

♩ = 60

C **G7**

Voice

Have you e - ver tried to draw a tu - ba? They
e - ver tried to dance the mam - bo? They

G7 **C** **A7**

4

V.

are the ve - ry har - dest things to draw. You start your pen - cil some - where near the
say the sec - ret's al - ways in your hips. But when I try and dance the

Dm **D7** **G7**

7

V.

ceil - ing and end up some - where down to - wards the floor. There are so
mam - bo, I end up al - most tan - gled in the splits. The

C **G7**

10

V.

ma - ny tubes and pipes in ev - ery tu - ba, and valves, a mouth - piece, bell and wa - ter
cla - vé is the key to ev - ery mam - bo, the bon - gos and the con - gas keep the

C **A7** **Dm**

13

V.

key. And then with all that shine, when I look to make a line, I see that
beat. Don't step on the one and you'll find it's lots of fun to dance the

G7 **C**

16

V.

some - one's face is star - ing back at me.
mam - bo, feel the rhy - thm move your feet.

To Ukulele



2 Ukulele:

18

Uke.

Fm Eb Fm Eb

22

Uke.

Fm Eb Fm Eb

1. *Back to Voice*

Have you

25a

Uke.

Eb C G7 C A7 Dm D7 G7

2.

34

Uke.

C G7 C A7 Dm G7 C

42

Uke.

Fm Eb Fm Eb

46

Uke.

Fm Eb Fm Eb

1. 2.

Verse 2

C **G7**
Have you ever tried to dance the mambo?

C
They say the secret's always in your hips.

A7 **Dm**
But when I try and dance the mambo,

D7 **G7**
I end up almost tangled in the splits.

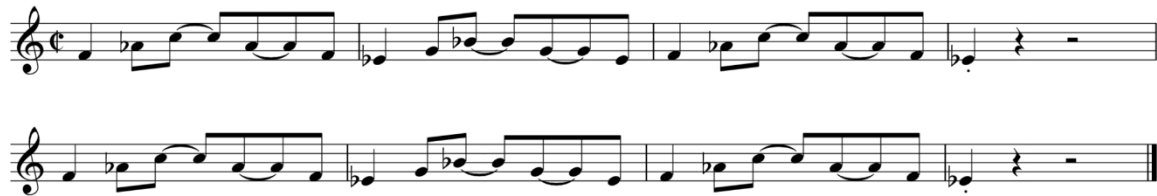
C **G7**
The clavé is the key to every mambo,

C
the bongos and the congas keep the beat.

A7 **Dm**
Don't step on the one and you'll find it's lots of fun

G7 **C**
to dance the mambo, feel the rhythm move your feet.

Instrumental - 8 bar ukulele riff



or play chords on the downbeat of each bar

Fm | Eb | Fm | Eb | Fm | Eb | Fm | Eb

“Have You Ever Tried to Draw a Tuba?”

Notes for Teachers by Eleanor Tucker

Chords	<i>Alternatively, ukuleles can play single notes</i> (on 1 & 3 beat of each bar)	Instruments featured in recording	Level/s
<p>C G7</p> <p>A7 Dm</p> <p>D7 Fm</p> <p>E_b</p>	<p>Uses C, B, A, F, G</p> <p>Try improvising by using</p> <p>C Major scale</p> <p>C D E F G A B</p> <p>Riff contains F, E_b, C, G, B_b</p>	<ul style="list-style-type: none"> ○ Flute (has its own melody but same rhythm as tuba melody) ○ Tuba (main melody with vocals) ○ Clavé ○ Bongos ○ Guiro ○ Ukulele (single line or chords) ○ Voice 	<p>3 4</p> <p>Challenge <i>To play the riff on ukulele requires a bit of skill.</i></p> <p><i>This riff could also be played on a keyboard or other instrument on which E_b and B_b are more instantly recognisable.</i></p> <p><i>Students could also sing this riff.</i></p>
<p>Strummed on downbeat, first beat of the bar. 1 x chord change for each bar</p>			

Single ukulele line (1st and 3rd beats of each bar)

Rhythmic accompaniment

Riff for Ukulele

Composer's Notes

“Draw the instruments of the orchestra while listening to each instrument being individually played”, said the lesson plan. I thought I would give it a try with my Prep-2 class. We discovered that drawing a tuba is much harder than drawing a dog.

This song features the tuba playing the main melody, followed by the flute playing its own melody, but using the same rhythm as the trombone melody. Later in the piece, they play their melodies concurrently, demonstrating the idea of **counterpoint**.

The tune is based on a mambo feel, with the clavé and the bongos implying a traditional Cuban rhythm section. However, this song is delivered at a much slower tempo than how mambos are usually played. I hope that it will inspire listeners to explore the richness of Cuban music which has been hugely influential on my own music.